

Cronulla

5 3 2

Located on the coveted Burraneer Peninsula and boasting peaceful Gunnamatta Bay views, this captivating 5 bedroom family home is unique in style, flexibility and seamless fusion of indoor/outdoor living.

Impeccably presented throughout, the high vaulted ceilings, clever use of space, and natural light-filled interiors remain the epitome of this impressive home that is situated on a generous 1011sqm (approx.) parcel of land and conveniently positioned within a short stroll to Woolooware Yacht Club, local shops and cafes.

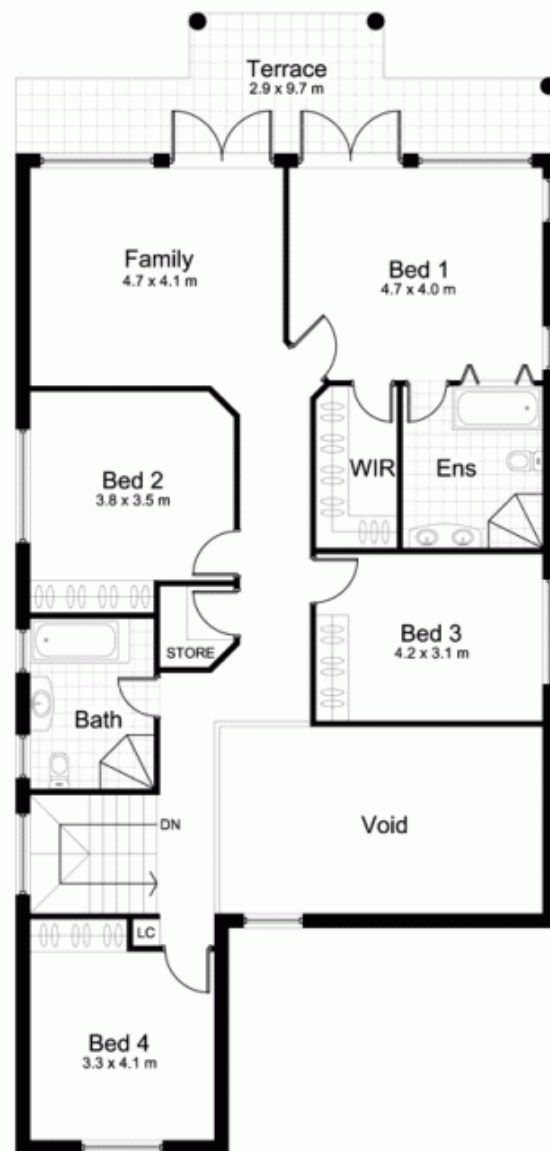
- * Only 11 years old (approx.) with a rendered facade
- * 5 double bedrooms all with built-in robes
- * Generous main bedroom with luxury spa bath ensuite, walk-in robe & terrace

Land Size : 1011 sqm

View : <https://www.gibsonpartners.com/sale/nsw/sutherland/cronulla/residential/house/5852157>



Ivan Lampret
02 9523 1333



248a Woollooware Road, BURRANEER

DISCLAIMER: All care has been taken in preparing this floor plan, however the accuracy is not guaranteed and no liability will be accepted for any reliance placed upon it

Produced by PRODUCT PHOTOGRAPHY STUDIO mob: 0414 697 215 email: mgphoto@people.net.au

