



14/81 Denman Avenue Woollooware NSW

3 2 2

North facing villa offers absolute direct frontage to Woollooware Golf Course offering panoramic views across the green fairways and 13th hole.

View : <https://www.gibsonpartners.com/sale/nsw/sutherland/woollooware/residential/villa/5852154>

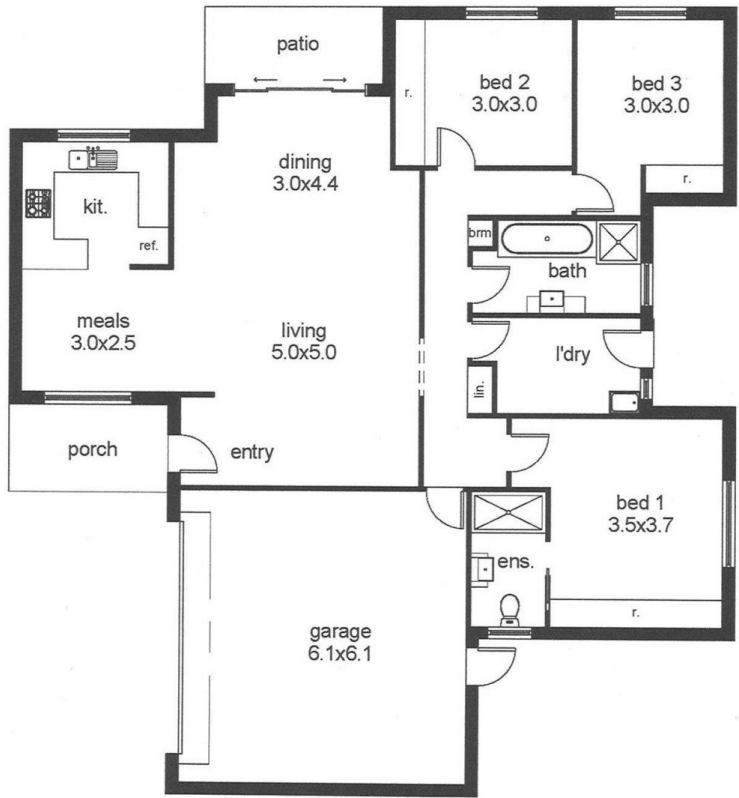
This huge single level villa with its big wide hallways and 10ft ceilings promotes a massive living area and open plan kitchen with brand new stainless steel appliances.

All 3 bedrooms are extra large with built-in robes, the main bedroom is of king size with ensuite. Huge internal laundry and jumbo sized double garage.

With a private patio and a very sunny and private wrap around grassy yard if you are looking to entertain or for the kids to play.



Ivan Lampret
02 9523 1333



UPRN:
1903135

