



11/63 Kingsway Cronulla NSW

2 1 2

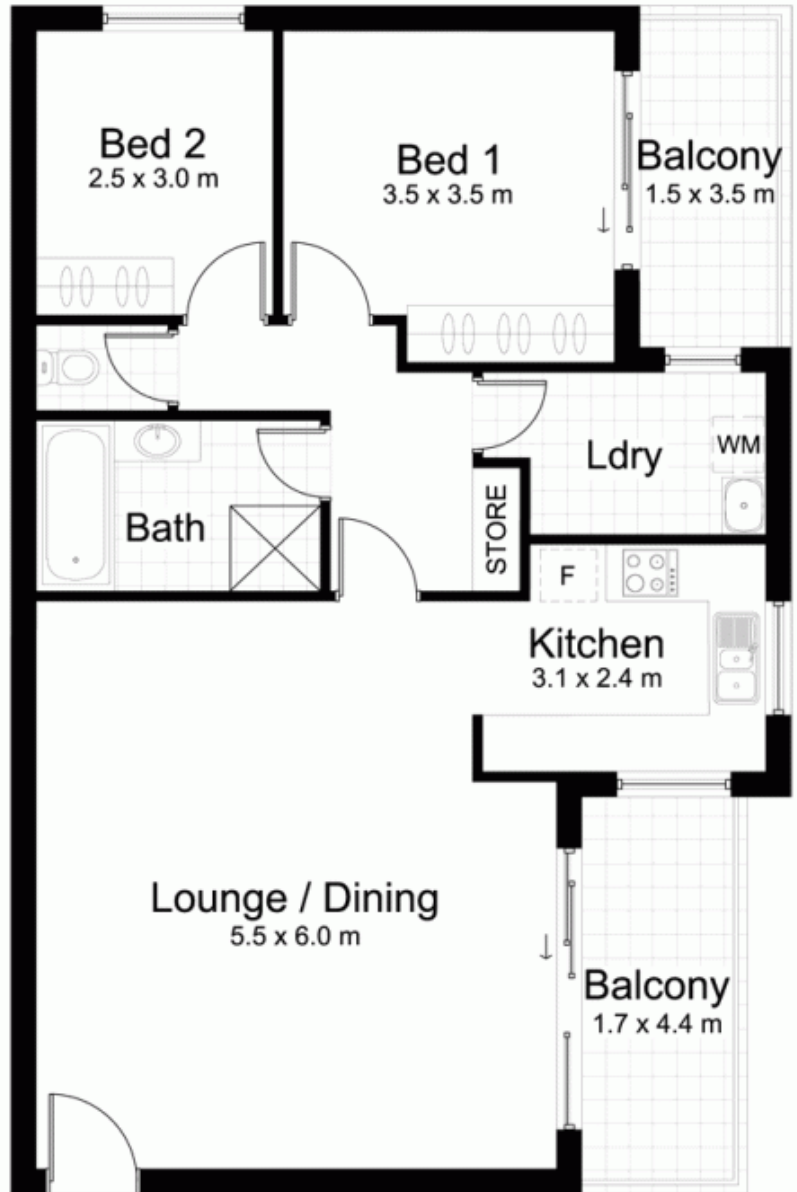
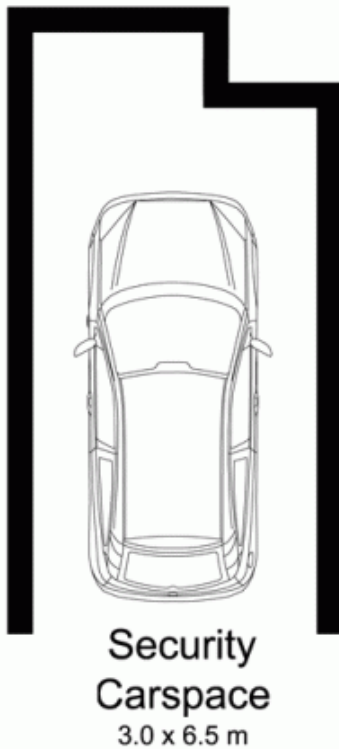
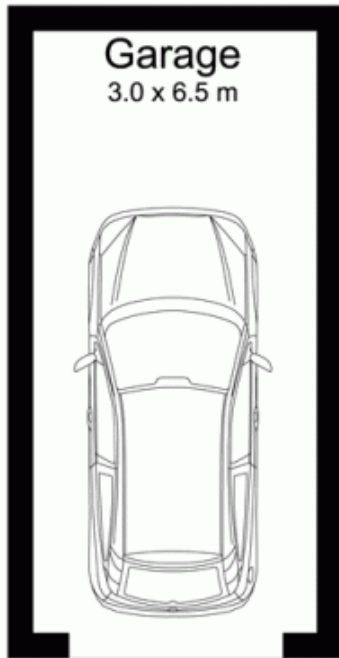
Freshly refurbished to reflect modern living throughout, offering spacious open plan interiors and positioned on the top floor.

View : <https://www.gibsonpartners.com/sale/nsw/sutherland/cronulla/residential/apartment/5852150>

Centrally located on the corner of Kurnell Rd and Kingsway, this light filled apartment is ideally situated within close proximity to beaches, shops & transport.

Perfect for those wanting a spacious unit close to all that Cronulla has to offer.

- Modern kitchen & bathroom
- Two balconies
- Security building
- Large internal laundry



11 / 63 The Kingsway, CRONULLA

DISCLAIMER: All care has been taken in preparing this floor plan, however the accuracy is not guaranteed and no liability will be accepted for any reliance placed upon it

Produced by PRODUCT PHOTOGRAPHY STUDIO mob: 0414 697 215 email: mgphoto@people.net.au

