



13/2-6 Harrow Street Sylvania NSW

3 2 2

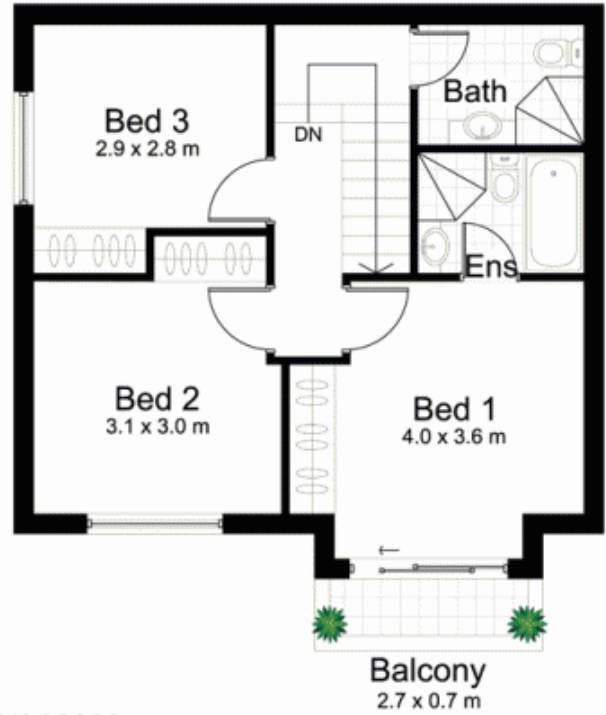
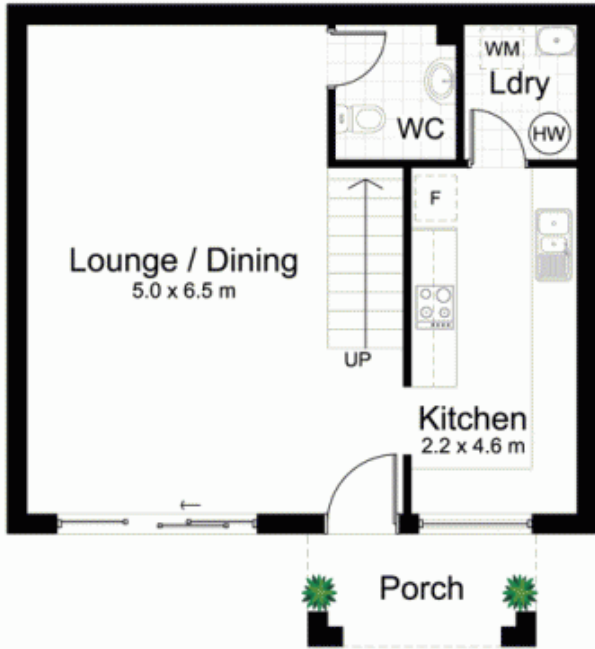
Jason Monk of Gibson Partners Real Estate PROUDLY MARKETS.....The home is impeccably presented throughout and features open-plan interiors stretching seamlessly to an outstanding entertainers' terrace.

View : <https://www.gibsonpartners.com/sale/nsw/sutherland/sylvania/residential/townhouse/5852148>

A stone's throw from the water's edge, this two-level contemporary townhouse has been designed to offer ease of living and elegance of style.

Perfectly positioned to enjoying the local lifestyle, the property stands just two minutes from the Tom Uglys village shops and adjacent to park and transport.

- * Three bedrooms, main with en-suite and balcony, all with built-in wardrobes
- * Luxuriously tiled and granite bathrooms plus guest WC



2 Security Carspaces
5.0 x 5.5 m



15 / 2-6 Harrow Road, SYLVANIA

DISCLAIMER: All care has been taken in preparing this floor plan, however the accuracy is not guaranteed and no liability will be accepted for any reliance placed upon it
Produced by PRODUCT PHOTOGRAPHY STUDIO mob: 0414 697 215 email: mgphoto@people.net.au

